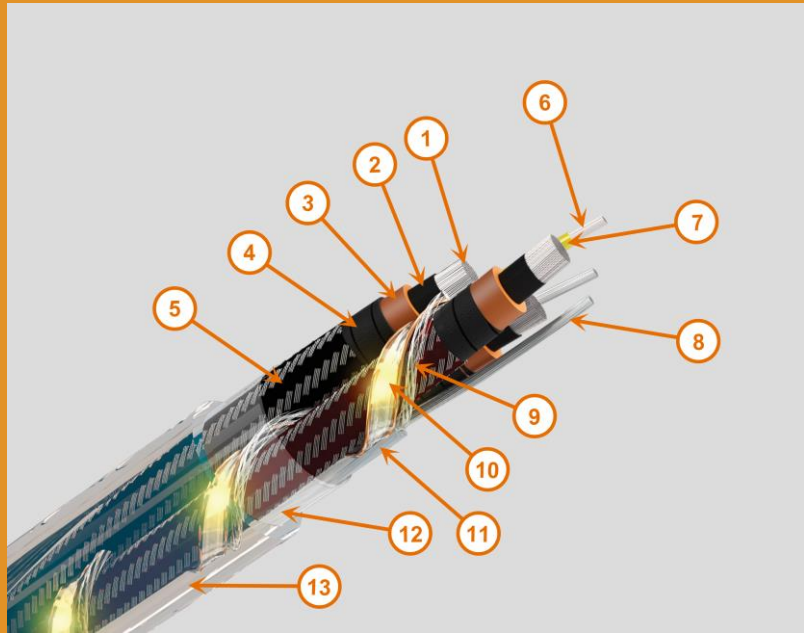


SHD-GC, ROUND PORTABLE CABLES WITH GROUNDING CONDUCTORS GROUND CHECK, SELF SUFFICIENT LEDs FOR VISUAL CONTROL AND TRANSPARENT TPU JACKET



Description:

- 1.- Flexible Annealed tinned Copper Conductors.
- 2.- Extruded Conductor Shielding.
- 3.- EPR (Ethylene-Propylene Rubber) insulation, natural color
- 4.- Extruded Insulation Shielding.
- 5.- Combination Annealed Tinned Copper & Colored Textile Braid Shield over individual Phase Conductors.
- 6.- Flexible Annealed tinned Plain Bare Copper Conductor.
- 7.- Yellow (XLP) Cross linked Polyethylene Insulated Ground Check Conductor
- 8.- Stranded Annealed Uninsulated tinned copper
- 9.- To unify the Ground between the braid shield of the Phases conductors and the LEDs devices is applied an annealed tinned copper braid shield
- 10.- Self-Sufficient LEDs as visual control device
- 11.- To conform internal circular way, is applied PVC flexible and Transparent
- 12.- Mylar Tape
- 13.- Overall transparent TPU (Thermoplastic Polyurethane) Jacket.

Purpose:

- Mining equipment power line

Properties:

- High reliability
- Low moisture absorption
- Flexible conductors
- Excellent flexibility
- Excellent acid resistance
- Excellent alkaline substance resistance
- Excellent high temperature resistance
- Excellent resistance to mechanical abuse
- Excellent abrasión resistance
- Excellent moisture resistance
- Excellent resistance to flame propagation
- Excellent tensile strength properties
- Excellent sunlight resistance
- Excellent oil resistance
- Excellent resistance to flattening and compression
- Excellent resistance to mechanical abuse
- Excellent ozone resistance
- Excellent tear strength properties
- Excellent mechanical resistance
- Personnel security

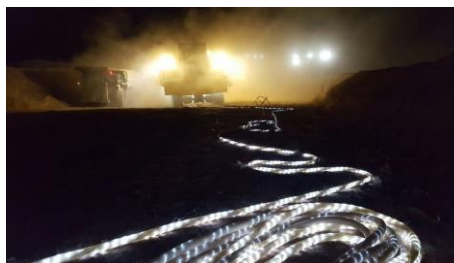
Special features:

- "Extra Heavy Duty" TPU jacket, is ideal for applications where maximum security and durability are required for Operator protection and are suitable for both underground and open pit mining rugged environments.

Special features:

- The transparent TPU Compound allows to visualize the self-sufficient LEDs devices from a long distance
- The Self-sufficients LEDs devices help to avoid damage to the cable caused by runovers from moving equipment, eliminating the possibility of electrical interruptions
- This kind of visual control provides maximum security in dark environments avoiding electrical shock to workers
- The Self-sufficient LEDs do not require any special internal connection when installing pluggs or joints
- The high clarity TPU compound not allow to the jacket be dullness despite the sun rays

Visibility of the cable in darkness:



"Maximun efficiency of visual control in dark on SHD-GC Cable"

Satndard:

- ICEA S 75-381

Voltage:

- 2 kV
- 5 kV
- 8 kV
- 15 kV
- 25 kV

Temperature:

- Normal continuous 90°C
- Overload 130°C
- Shortcircuit 250°C

Type of Installation:

- Visible (on the ground)

Insulation Compound:

- Ethylene-Propylene Rubber (EPR)

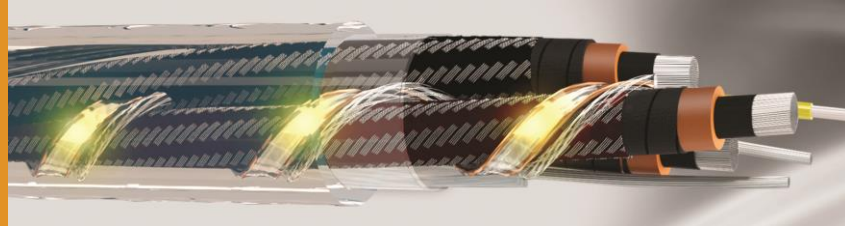
Jacket Compound:

- Thermoplastic Polyurethane (TPU)

Ordering information:

- Round SHD-GC cable, Voltage, conductors size, Self-sufficients LEDs devices, TPU Jacket & length in feet

SHD-GC, ROUND PORTABLE CABLES WITH GROUNDING CONDUCTORS GROUND CHECK, SELF SUFFICIENT LEDs FOR VISUAL CONTROL AND TRANSPARENT TPU JACKET



Voltage (V)	Calibre (AWG-kcmil)	Conductor size (mm ²)	Power Conductors	Conductor Diameter Inches / mm	Insulation Thickness Inches / mm	Insulation Diameter Inches/ mm	Grounding conductors	Grounding conductor size (AWG-kcmil)	Grounding conductor cross section area (mm ²)	Ground check size (AWG)	Ground check Conductor diameter Inches/mm	Outside diameter Inches / mm	Approximate weight (lb/1000 ft)	Packing
2 000	250	126,7	3	0,605 / 15,37	0,095 / 2,41	0,805 / 20,45	2	1/0	53,48	6	0,193 / 4,91	2,924 / 74,26	5 968	REEL
2 000	300	152,0	3	0,657 / 16,69	0,095 / 2,41	0,856 / 21,76	2	1/0	53,48	6	0,193 / 4,91	3,066 / 77,87	6 645	REEL
2 000	350	177,3	3	0,719 / 18,27	0,095 / 2,41	0,919 / 23,34	2	2/0	67,43	6	0,193 / 4,91	3,197 / 81,21	7 572	REEL
2 000	500	253,4	3	0,843 / 21,42	0,095 / 2,41	1,043 / 26,50	2	4/0	107,2	6	0,193 / 4,91	3,530 / 89,65	9 949	REEL
5 000	3/0	85,01	3	0,493 / 12,53	0,110 / 2,79	0,760 / 19,31	2	2	33,62	6	0,193 / 4,91	2,882 / 73,21	4 857	REEL
5 000	4/0	107,0	3	0,557 / 14,14	0,110 / 2,79	0,824 / 20,92	2	1	42,40	6	0,193 / 4,91	3,00 / 76,40	5 471	REEL
5 000	250	126,7	3	0,605 / 15,37	0,120 / 3,05	0,893 / 22,68	2	1/0	53,48	4	0,244 / 6,20	3,187 / 80,95	6 438	REEL
5 000	300	152,0	3	0,657 / 16,69	0,120 / 3,05	0,944 / 23,99	2	1/0	53,48	4	0,244 / 6,20	3,296 / 83,72	7 057	REEL
5 000	350	177,3	3	0,719 / 18,27	0,120 / 3,05	1,007 / 25,57	2	2/0	67,43	4	0,244 / 6,20	3,466 / 88,04	8 121	REEL
5 000	500	253,4	3	0,843 / 21,42	0,120 / 3,05	1,131 / 28,72	2	4/0	107,2	4	0,244 / 6,20	3,768 / 95,71	10 428	REEL
8 000	1/0	53,48	3	0,388 / 9,86	0,150 / 3,81	0,737 / 18,72	2	4	21,2	6	0,193 / 4,91	2,833 / 71,97	4 120	REEL
8 000	2/0	67,43	3	0,438 / 11,12	0,150 / 3,81	0,787 / 19,98	2	3	26,67	4	0,244 / 6,20	2,972 / 75,50	4 616	REEL
8 000	3/0	85,01	3	0,493 / 12,53	0,150 / 3,81	0,842 / 21,39	2	2	33,62	4	0,244 / 6,20	3,118 / 79,20	5 286	REEL
8 000	4/0	107,0	3	0,557 / 14,14	0,150 / 3,81	0,906 / 23,00	2	1	42,40	4	0,244 / 6,20	3,212 / 81,59	5 958	REEL
8 000	250	126,7	3	0,605 / 15,37	0,150 / 3,81	0,954 / 24,23	2	1/0	53,48	4	0,244 / 6,20	3,315 / 84,20	6 605	REEL
8 000	300	152,0	3	0,657 / 16,69	0,150 / 3,81	1,006 / 25,55	2	1/0	53,48	4	0,244 / 6,20	3,467 / 88,06	7 502	REEL
8 000	350	177,3	3	0,719 / 18,27	0,150 / 3,81	1,068 / 27,13	2	2/0	67,43	4	0,244 / 6,20	3,630 / 92,21	8 398	REEL
8 000	500	253,4	3	0,843 / 21,42	0,150 / 3,81	1,192 / 30,28	2	4/0	107,2	4	0,244 / 6,20	3,926 / 99,71	10 706	REEL
15 000	1/0	53,48	3	0,388 / 9,86	0,210 / 5,33	0,860 / 21,84	2	4	21,2	6	0,193 / 4,91	3,121 / 79,27	4 602	REEL
15 000	2/0	67,43	3	0,438 / 11,12	0,210 / 5,33	0,909 / 23,09	2	3	26,7	4	0,244 / 6,20	3,226 / 81,93	5 145	REEL
15 000	2/0	67,43	3	0,438 / 11,12	0,210 / 5,33	0,909 / 23,09	2	1	42,4	4	0,244 / 6,20	3,226 / 81,93	5 306	REEL

- NOTES:**
- For constructions different from the ones shown please get in contact with our Technical Assistance Department.
 - Data is subject to normal manufacturing tolerances
 - These products are not in stock.
 - Delivery is possible in specific lengths

SHD-GC, ROUND PORTABLE CABLES WITH GROUNDING CONDUCTORS GROUND CHECK, SELF SUFFICIENT LEDS FOR VISUAL CONTROL AND TRANSPARENT TPU JACKET



Voltage (V)	Calibre (AWG-kcmil)	Conductor size (mm ²)	Power Conductors	Conductor Diameter Inches / mm	Insulation Thickness Inches / mm	Insulation Diameter Inches/ mm	Grounding conductors	Grounding conductor size (AWG-kcmil)	Grounding conductor cross section area (mm ²)	Ground check size (AWG)	Ground check Conductor diameter Inches/mm	Outside diameter Inches / mm	Approximate weight (lb/1000 ft)	Packing
15 000	3/0	85,01	3	0,493 /12,53	0,210 /5,33	0,965 /24,51	2	2	33,6	4	2,44 /6,20	3,385 /85,99	5 921	REEL
15 000	4/0	107,2	3	0,557 /14,14	0,210 /5,33	1,028 /26,12	2	1	42,4	4	2,44 /6,20	3,520 /89,40	6 694	REEL
15 000	250	126,7	3	0,605 /15,37	0,210 /5,33	1,077 /27,35	2	1/0	53,48	4	2,44 /6,20	3,623 /92,02	7 378	REEL
15 000	350	177,3	3	0,719 /18,27	0,210 /5,33	1,191 /30,24	2	2/0	67,43	4	2,44 /6,20	3,896 /98,97	9 092	REEL
15 000	500	253,4	3	0,843 /21,42	0,210 /5,33	1,315 /33,40	2	4/0	107,2	4	2,44 /6,20	4,192 /106,4	11 469	REEL
25 000	1/0	53,48	3	0,388 /9,86	0,295 /7,49	1,034 /26,27	2	4	21,2	6	0,193 /4,91	3,540 /89,91	5 532	REEL
25 000	2/0	67,43	3	0,438 /11,12	0,295 /7,49	1,083 /27,52	2	3	26,7	4	2,44 /6,20	3,676 /93,37	6 398	REEL
25 000	3/0	85,01	3	0,493 /12,53	0,295 /7,49	1,139 /28,94	2	2	33,6	4	2,44 /6,20	3,794 /96,38	7 080	REEL
25 000	4/0	107,2	3	0,557 /14,14	0,295 /7,49	1,202/30,54	2	1	42,4	4	2,44 /6,20	3,960/100,59	8 004	REEL
25 000	250	126,7	3	0,605 /15,37	0,295 /7,49	1,251 /31,78	2	1/0	53,48	4	2,44 /6,20	4,064/103,22	8 733	REEL
25 000	350	177,3	3	0,719 /18,27	0,295 /7,49	1,365 /34,67	2	2/0	67,43	4	2,44 /6,20	4,307/109,39	10 463	REEL
25 000	500	253,4	3	0,843 /21,42	0,295 /7,49	1,489 /37,83	2	4/0	107,2	4	2,44 /6,20	4,604/116,93	12 950	REEL

- NOTES:**
- For constructions different from the ones shown please get in contact with our Technical Assistance Department.
 - Data is subject to normal manufacturing tolerances
 - These products are not in stock.
 - Delivery is possible in specific lengths